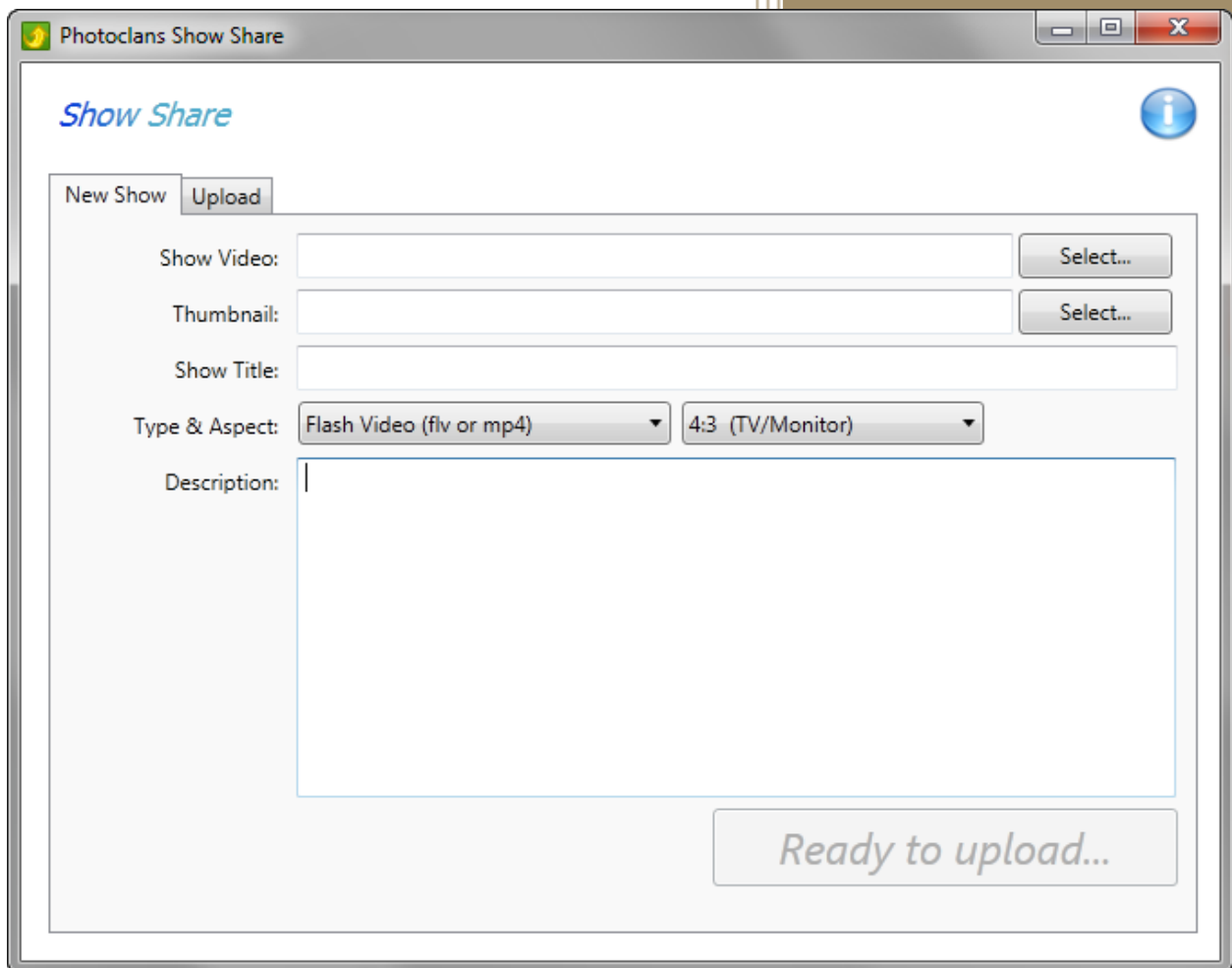


2011

Show Share 1.2 Manual



The screenshot shows a window titled "Photoclans Show Share" with a standard Windows-style title bar. The main content area has a header "Show Share" with an information icon on the right. Below the header are two tabs: "New Show" (selected) and "Upload". The "New Show" tab contains the following fields and controls:

- "Show Video:" text box with a "Select..." button to its right.
- "Thumbnail:" text box with a "Select..." button to its right.
- "Show Title:" text box.
- "Type & Aspect:" section with two dropdown menus: "Flash Video (flv or mp4)" and "4:3 (TV/Monitor)".
- "Description:" text area.
- A large button at the bottom right with the text "Ready to upload..."

Derek Carlin

Photoclans.Net

7/17/2011

This document reviews how to use the PhotoClans “Show Share” application. This application allows our members to upload shows directly the group’s website without having to use middle-man services such as YouSendIt.com. Also we don’t charge for overly large shows (whereas YSI’s free accounts have a 100 megabyte cap – while that is sufficient for 90% of our member shows, there are the occasions when members need just a few megabytes more to tell their story).

The application is only available for PCs running Windows (XP (Service Pack 3), Vista, & Windows 7 are currently supported). Since most of our members are using ProShow products which also only run on PCs, this means most of our members should be able to use this application.

The web-only method of show uploads (using YouSendIt, YouTube links, etc) will remain in place for the foreseeable future to allow for Mac-only members or those who might have problems running this application.

For more information about actually generating your show’s video files, see Shona’s “Sharing Shows With the World” article on the web site (the “preparing shows” link on the articles tab of the Resources page on the WCAG site (<http://animatography.photoclans.net>)).

Installation

There are two ways to install the application on your machine. Which one you use depends on which version of Windows and web browser you have on your machine. If the first method doesn’t work for you, then try the second.

Installation – One Click Method

This is the simplest approach if it works for you (some browsers will view it as a security risk and not allow it. ☹).

1. Go to the application’s home page:
<http://photoclans.net/tools/showUploader/publish.htm>
2. On that page, you will see an “install” link, click that link
3. You may see a security warning; click Yes/OK to allow the installation to proceed.
4. If your machine is older, it may ask you to install Windows Installer and/or the latest version of Windows .Net Framework, give the installer permission to do so and it should download and install these pieces automatically
5. The application should then complete installation and start up for the first time



The One-Click installation web page

If you click the Install link and the browser displays a page of text, then your browser is blocking the application installation. You will have to use the next method to install the application.

Installation – Download the zip file

If the above method doesn’t work for you, you can download the installation package and run it locally.

1. Download the ZIP file from: <http://photoclans.net/tools/showUploader/zips/ShowShare.zip> to a directory on your machine
2. On your machine unpack the zip file (usually you will be able to simply double click on it and Windows will open it as a “compressed folder”) and run the install application: “setup.exe”. This will install the Show-Share application.

After Installation

Once the application is installed, you are ready to upload your shows. Each time you start the application, it will check for newer versions and ask you if you want to update (normally you will).

Using Show Share

Show Share 1.2 is a very simple application. For now its sole purpose is to get your shows from your PC onto the group’s website

When you start the application, after it checks to see if there are any updates, it shows you a form that is going to look similar to what you have used on the web site in your show manager.

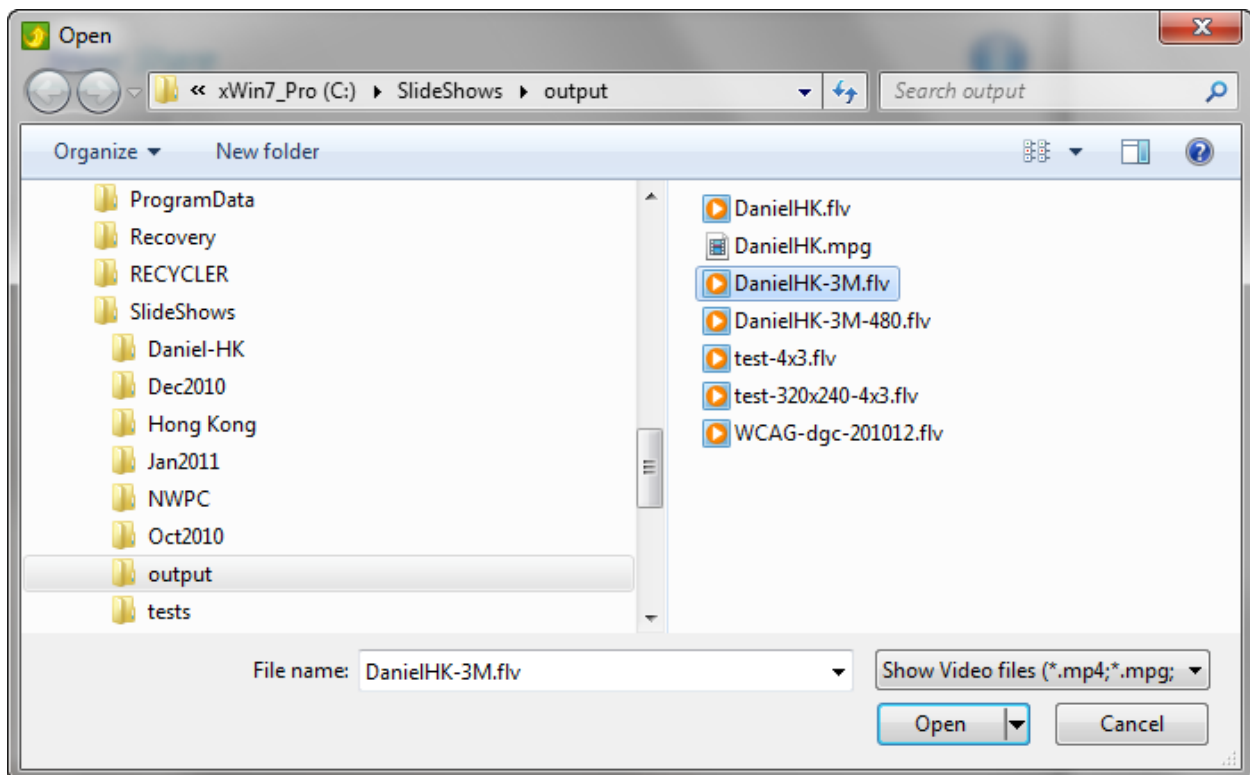
The screenshot shows a window titled "Photoclans Show Share". Inside the window, there is a "Show Share" logo and an information icon. Below this is a "New Show" form. The form contains the following fields and controls:

- Show Video:** A text input field with a "Select..." button to its right.
- Thumbnail:** A text input field with a "Select..." button to its right.
- Show Title:** A text input field containing the text "Show Title".
- Type & Aspect:** Two dropdown menus. The first is set to "Flash Video (flv or mp4)" and the second is set to "4:3 (TV/Monitor)".
- Description:** A large text area for entering a description.
- Ready to upload...:** A large button at the bottom of the form.

The information you’re going to need about your show:

- **The actual video file:** this can currently be one of 3 formats – MP4, FLV (both are often called “flash video” – ProShow Gold makes FLV video files, and with ProShow Producer, you can also create MPEG4 (MP4) video files), and the ProShow “web show” file format, the “PX” extension).
- **A thumbnail image** to be shown in lists of shows, etc. on the web site. **This is optional**, but using a signature photo from the show gives your show a little more polish on the site.
- **A title:** every show needs one. 😊
- **Your show’s aspect ratio:** this is the aspect ratio of your show. Typically it will be the square-ish 4:3 or the widescreen look of 16:9. Show Share will also allow you to specify 3:2 (landscape SLR ratio) and “custom” for those times when you’ve chosen a non-standard shape to your show (see “*custom aspect ratios*” below)
- **A description for your show:** This can be anything you want to use to introduce the show to your audience, be it some background trivia, the intended audience, or any other additional message you want to give.

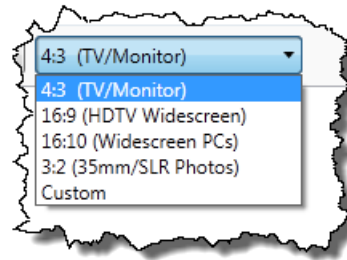
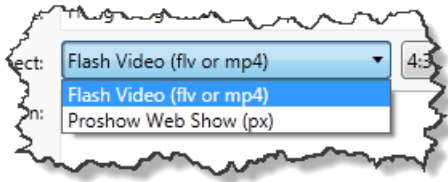
The “Select” buttons on the video and thumbnail fields will open the standard Windows “File Open” dialog with which you are probably familiar. Use it to navigate to where you have written your video file (or thumbnail) and select it.



Optionally, if you have Windows explorer opened to where you’ve put your files, you can drag & drop the file from there onto the appropriate field in Show-Share and the file name and path will be entered into the text box.

The title and description fields are standard text boxes, so all you have to do is type in the appropriate information.

The file type and aspect ratio selectors are “combo boxes”, just click them to see the list of your supported options.



The File type and Aspect ratio selectors

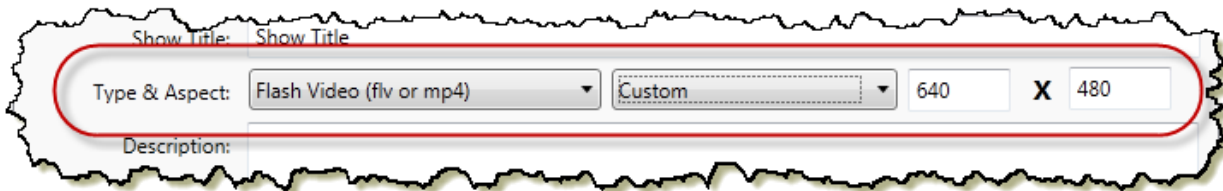
The supported video files on our website are currently FLV, MP4 and PX (Photodex’s proprietary “web show” format).

Note: when you select a video file, the application will automatically make an educated guess at the video type based on your file’s extension. So most times you won’t need to set the file type. The only exception would be if you had no extension or, for some trouble-making reason, gave it an extension not associated with that type of file (e.g. calling an FLV file “*myshow.fred*”)

You *will* have to set the aspect ratio. Currently Show-Share cannot determine the aspect ratio of your show. Select an aspect ratio that matches what you have used in your show. Remember, if you make a mistake in this, your show might look stretched/squished when playing back on the website. However, if you do make a mistake, you can log into your account on the website and use the show management panel of your account to set the correct aspect.

Custom Aspect Ratios

If you use a non-standard aspect ratio (perhaps you were doing a show of panoramas and chose to make the whole show with a ratio of 4:1 then to enter this fact into your show information you select “Custom” as your aspect ratio. When you do this, you will see two text boxes appear for the X to Y ratio.



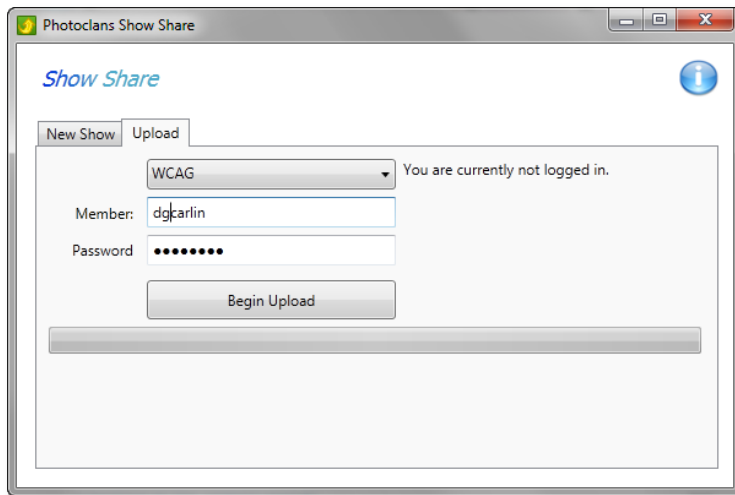
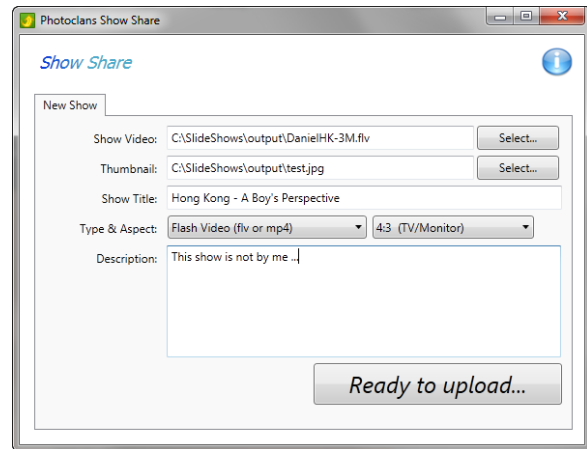
If you calculated a specific ratio, then enter it here (usually the same numbers you used for a custom aspect ratio in your Show Options in ProShow Gold/Producer). If you’re not sure of the exact ratio, then enter the frame size you used when creating the show (e.g. 640 by 480), and the aspect ratio will be maintained during playback on the website.

Ready to Upload...

The video file, title, description, aspect ratio and file type are required information; only the thumbnail is optional at this time. Once you have something in these fields, the “Ready to upload” button will be enabled.

When you click the “Ready to upload...” button, if everything looks all right, then the “Upload” tab panel is shown. This is where you make the connection to your group’s web server.

In order to upload files to the server, you need to have a member account for your group. If you don’t have one yet, please contact your webmaster who will set one up for you.



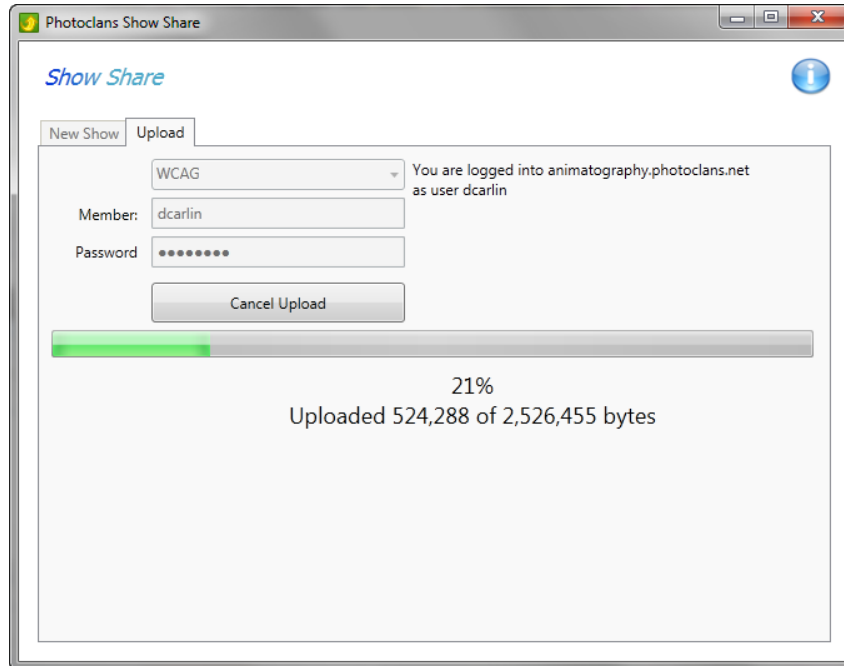
On the Upload tab, select the group to which you belong (the first combo box). Then enter the login id you use to log into the website (if you don’t know what your “login id” is, use the email address you use with the group. The site login can accept either.

Then enter your password and click “Begin Upload” to start the upload process.

The upload goes through the following steps automatically:

1. Authorizes your access to the website
2. Uploads your file to a temporary location on the server
3. Queues your “new show” request on the server
4. Requests the server process your request (which copies your file from the temporary location to the location where member shows are kept)
5. Closes the connection to the server.

As with the online web-show form, when the transaction is complete, you will receive a confirmation email with the success/failure of the operation (unless it failed during the upload itself). While the file is uploading, you will see a progress bar, as well as a percentage done and bytes uploaded count ... for the different ways people like to monitor progress. 😊



Once the upload begins, the “Begin” button becomes a “Cancel” button. If at any time you wish to abort your upload, press cancel and wait for the application to clean up. It tells you once the application has canceled the upload properly.

Auto-Saving of Settings

When you close the application, certain settings are kept in your system registry. This speeds the upload process next time by (usually) not having to change those settings you might use regularly. **Note:** these settings are cleared when you download/install a new version of the software.

The settings saved are:

- Your choice of group website
- Your userid/password
- Your show file type (most of us produce the same type of file every time)
- Your show aspect ratio (again, many people tend to have a favorite aspect ratio)

About?

If you've been looking at the application, you may have noticed a round button-looking graphic with an "i" on it. This is indeed a button and if you press it, you will see an "About" dialog come up. This dialog has the current version number of the software as well as the application and company name. Of possible interest to some members is the "For More Information" link. Clicking this should start your web browser, and you will be taken to a page with the application's Release Notes. This is a record of what has been fixed or changed with each release of the software.

